

Beryl Burton Way



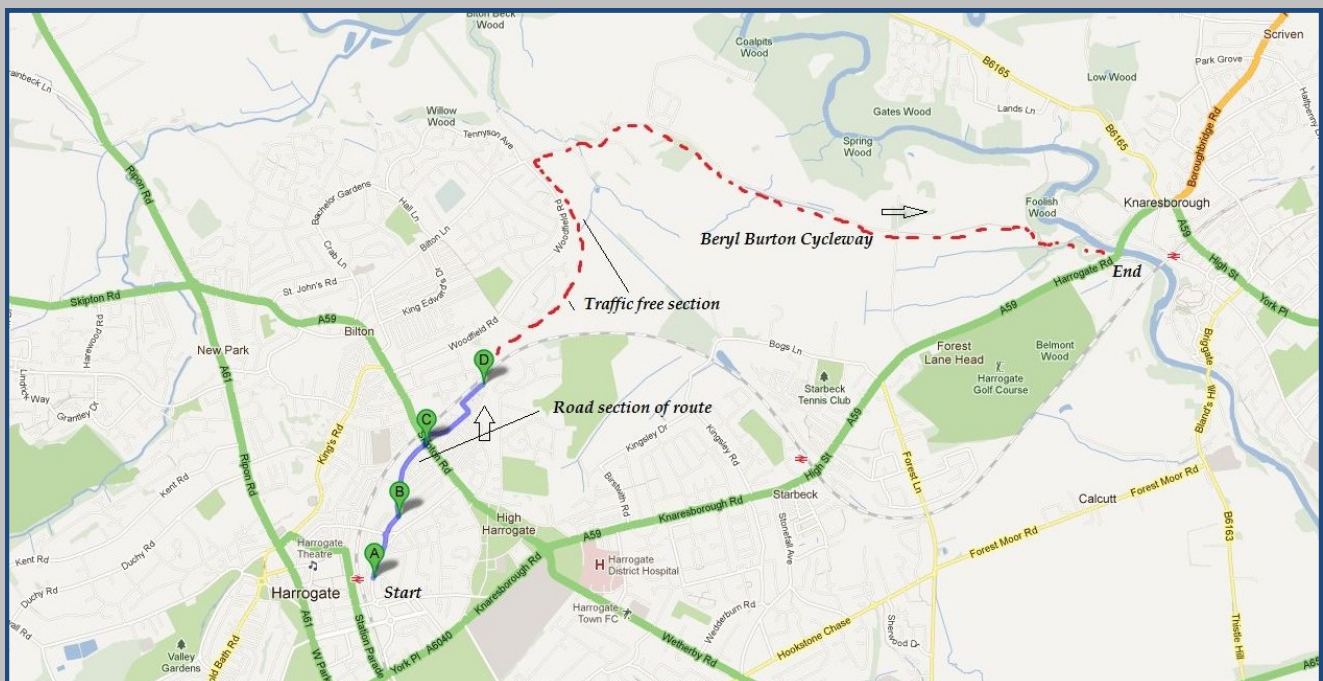
NCN route 636

Distance: 3 miles / 5KM

Time: 25 mins

Difficulty: 3 out of 5. Mostly traffic free cycling

Description: Beryl Burton Way celebrates the achievements of the cyclist Beryl Burton who dominated British Womens cycling in the 1970's. The route connects North Harrogate to Knaresborough following mostly traffic free routes.



To get further information about cycle routes and other forms of sustainable travel visit: www.openharrogate.co.uk

North Yorkshire County Council makes every effort to ensure that the information contained here is accurate and up-to-date. However, we accept no liability for any loss or inconvenience caused by reliance on inaccurate material contained in this, or related documents or electronic material.